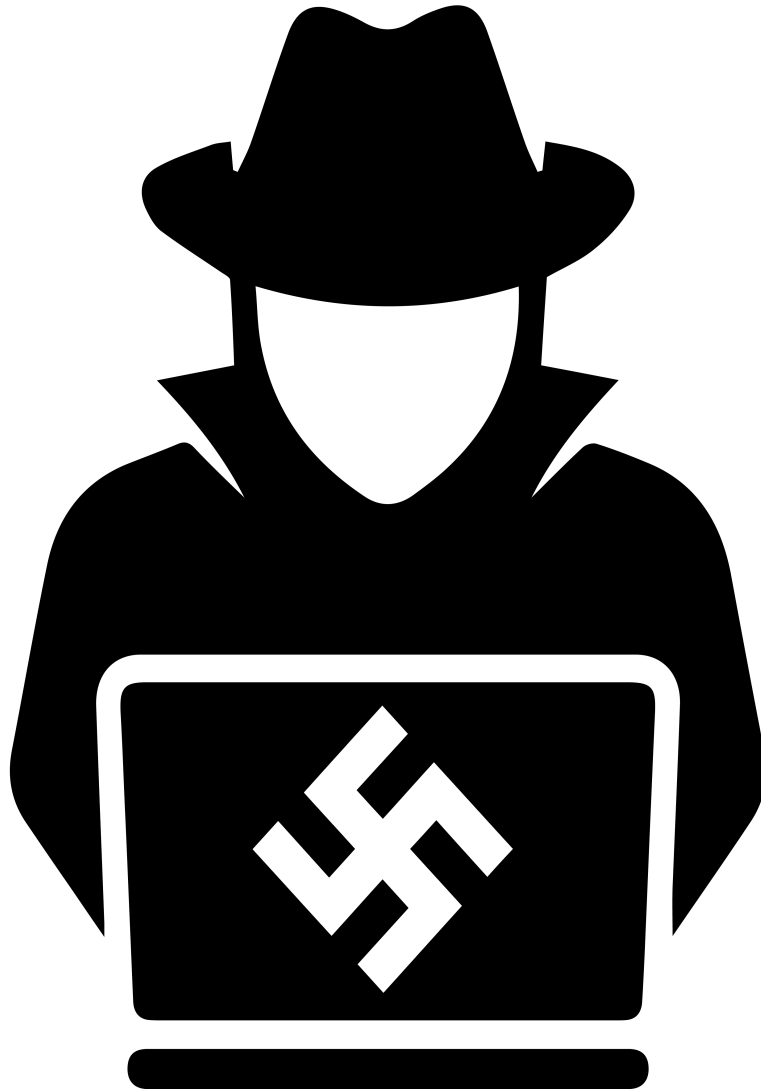


MODDING YOUR PHONE

A PRIVACY & SECURITY GOYS GUIDE



BY: OPSECGOY

T.ME/PRIVSECGOY

INTRO

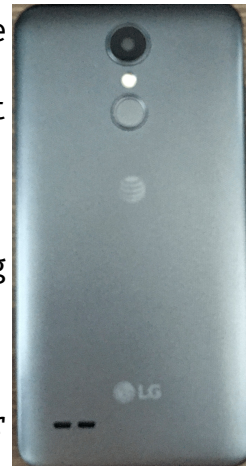
Living in today's world it is very taboo to not have some sort of mobile device on or around you at most times of the day. As we all well know these devices are used against perpetrators and innocent people alike in criminal investigations, like the Capitol "Riots" of January 6th, 2021. This technology can make your life easier and better, but it can also ensnare you into legal trouble that you otherwise would have never had coming. With globalist jews in charge of nearly every major tech vendor today it is easy to understand how this can become a huge problem for our goys. In this guide I'm going to show you how to can remove a few different sensors from your phone in order to disable some of the spying methods available. Remember, each disassembly may be slightly different but removing the components will be very similar. Viewing a disassembly video for your particular device beforehand may be helpful.

NOTE: BEFORE YOU MOD YOUR PHONE MAKE SURE YOU HAVE NOT POWERED IT ON (EVER) AND THE SIM IS REMOVED.

OPENING THE PHONE

First, we have to open up the phone. In this example I'll be using an LG Phoenix 4. This phone is great for this purpose because it is inexpensive, has a removable battery, and is easy to take apart.

Let's get on with it! In this first image you will see the back of the phone. All you have to do to remove it



is pull it off. Slipping your fingernail or something thin in the groove can make this process a little easier. Once you get the back off of the phone you'll see some screws and also

traces at the bottom of the phone. We will first remove these traces from the phone as they are acting as an antenna for some of the radios on board the device. We do **NOT** want there to be any connection made to a nearby cell tower or wireless access point during this process because it would reveal details about our location. Remove the 3 screws from this board and set aside.

CAREFULLY PRY OFF THE
ANTENNAS





With the antennas removed it is time to remove all of the remaining screws on the back of the device. We are going to begin getting into the actual guts of the device. This is where all the fun is.



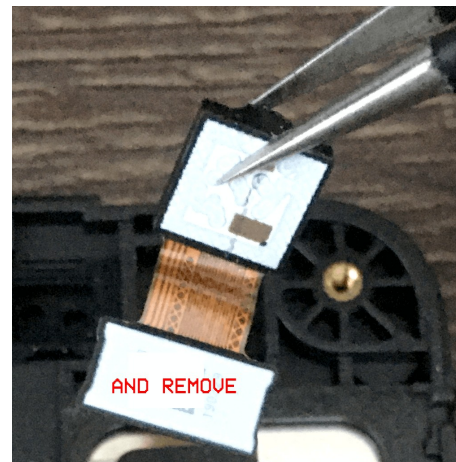
Once all the screws are removed slide a thin prying tool or a fingernail in between the glass of the screen and the plastic surround. Work your way around the device until it pops off completely, exposing the main board. It also helps if you press on the back of the device with the hand holding it while you pry it apart. Take your time with this part or you could ruin the device!

REMOVING THE CAMERAS

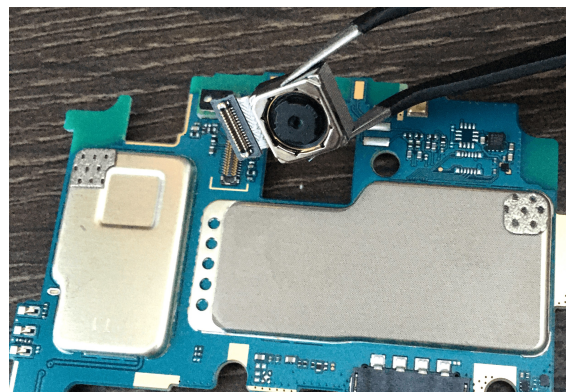
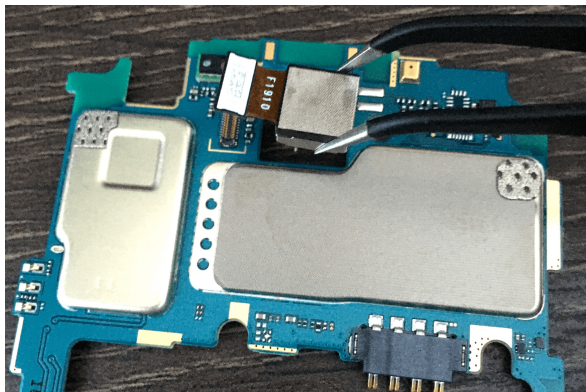
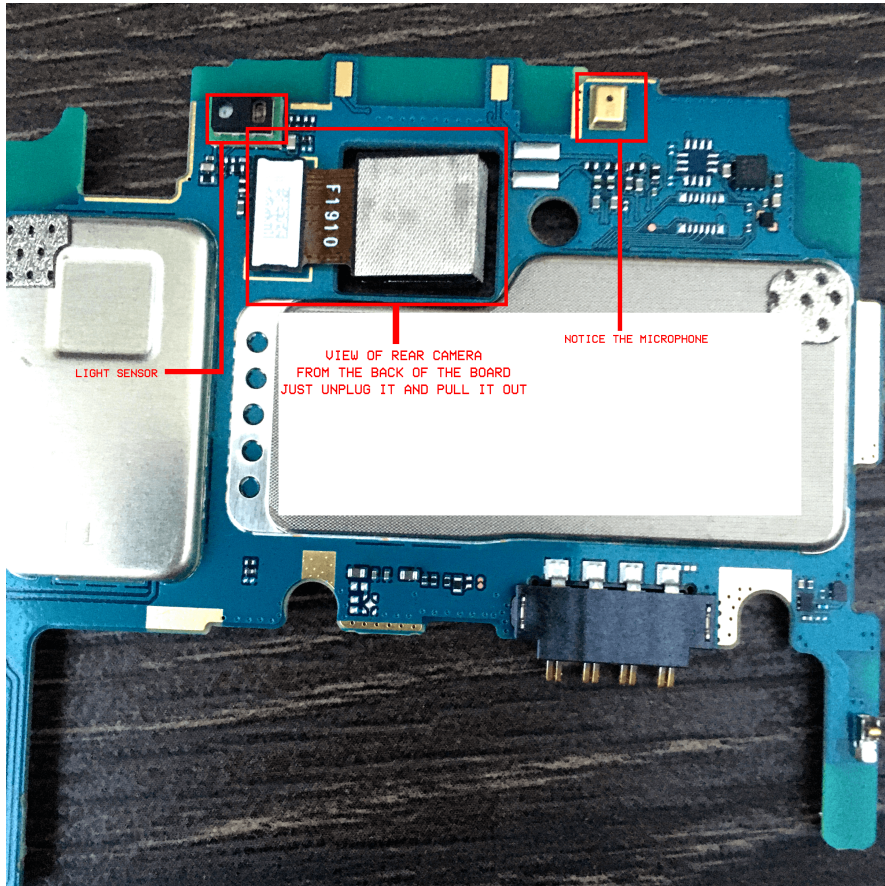
Now that we have access to the main board I'll show you how easy it is to remove the cameras from the device. It is just a matter of unplugging a small ribbon cable and pulling them off the board.



First we will start with the front camera.

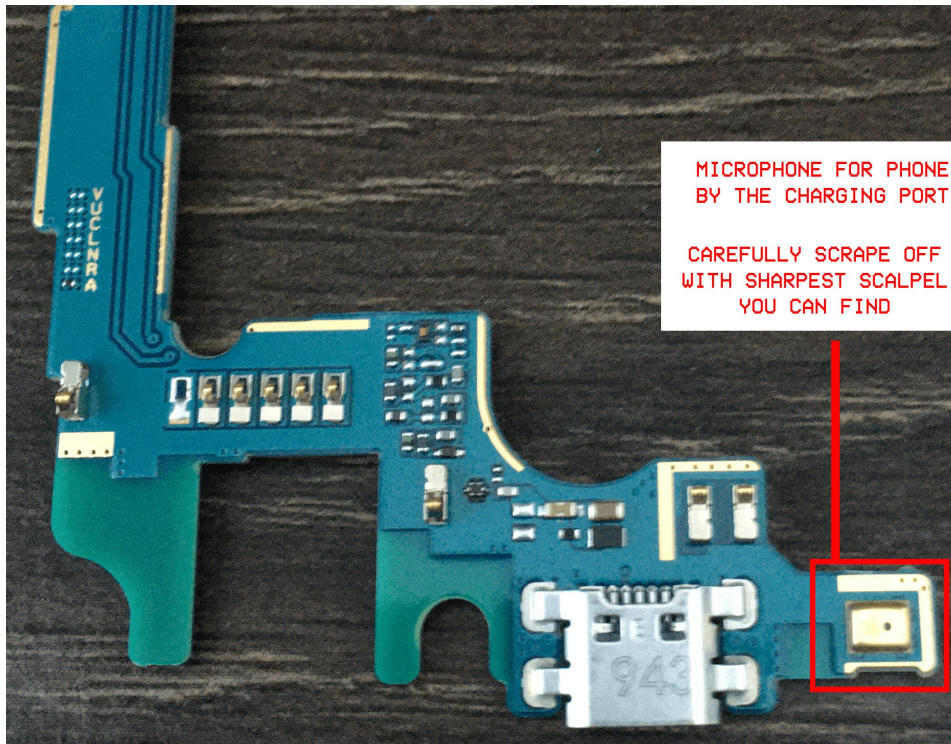


Next we will remove the rear camera. This is basically the same process. Simply unplug the camera from the board and remove. Notice in the photos that you can now see the microphones on the device as well as the light sensor. I prefer to remove these as well.

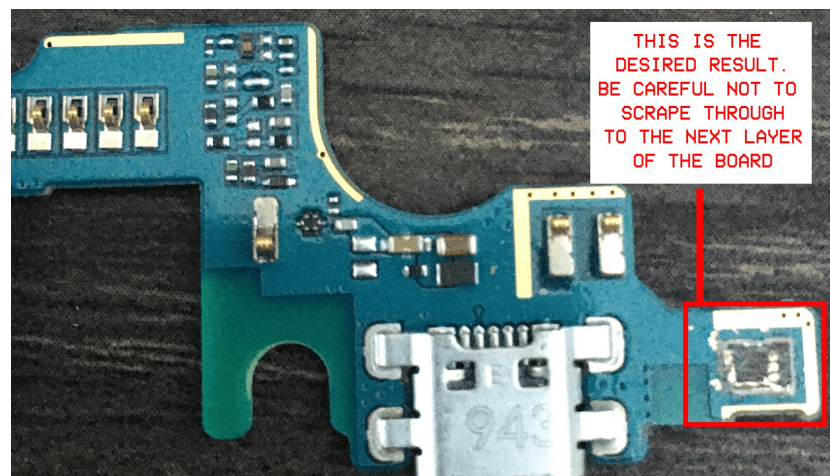


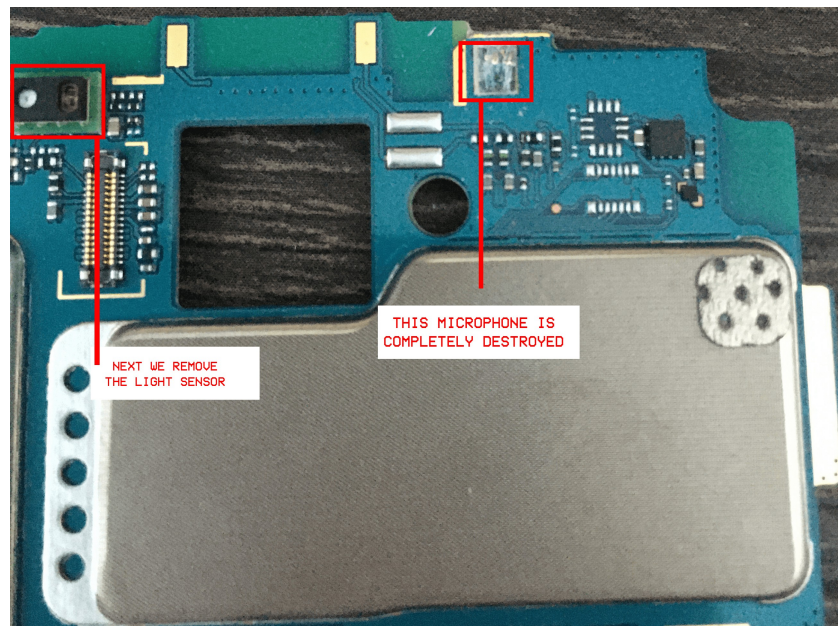
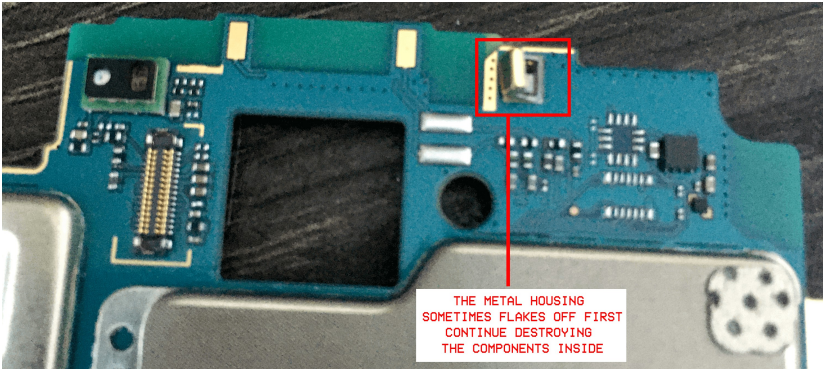
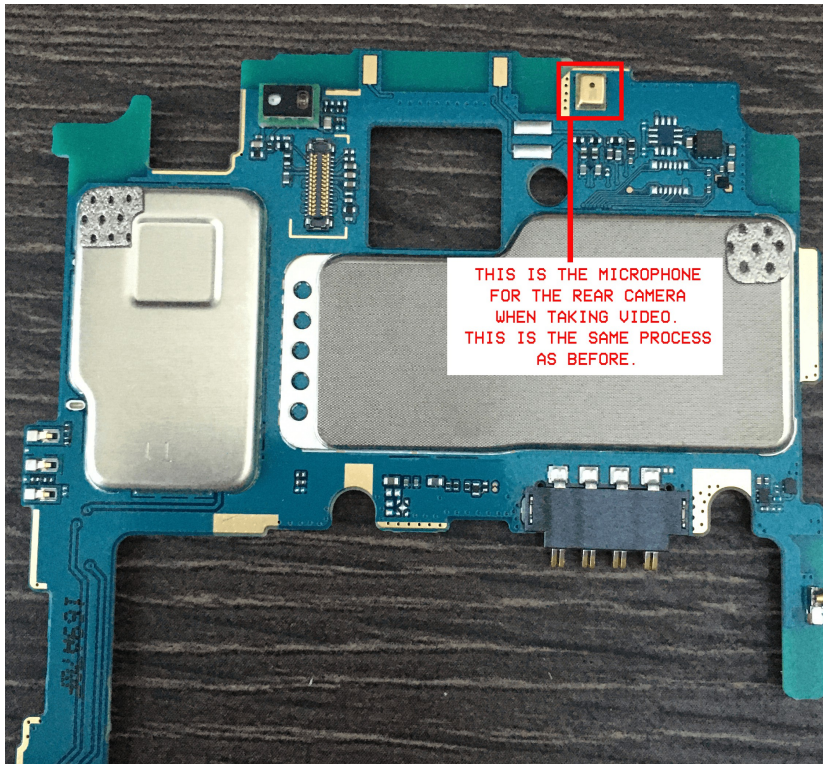
REMOVING THE MICROPHONES

Removing the microphones is a bit more tricky than the cameras, but if you have patience and the right tools you can remove them with ease. I recommend a very sharp scalpel or a fresh carbide tipped razor for this job. Also note, If you scratch too far you can



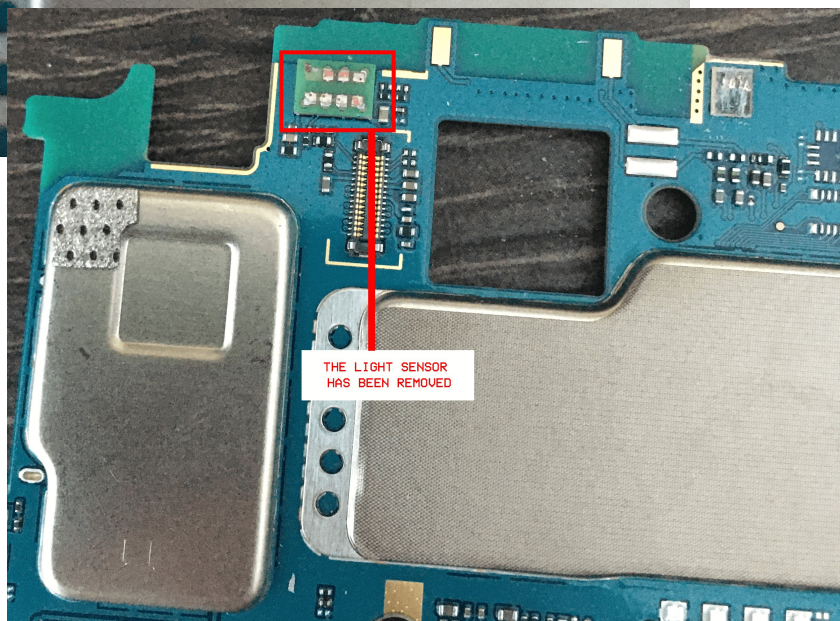
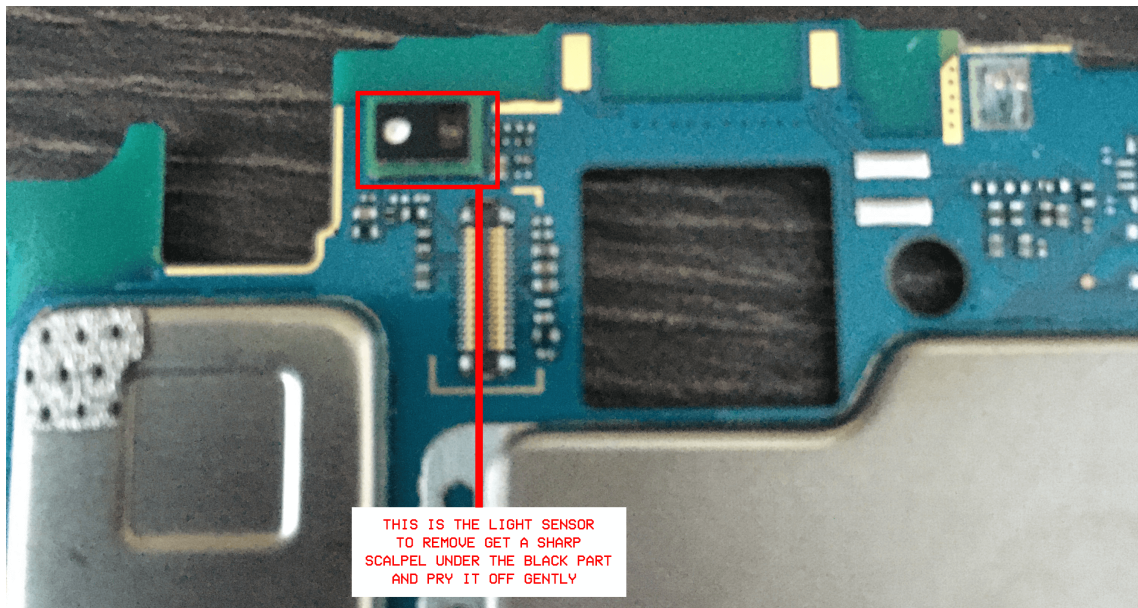
damage the traces and components on the opposite side of the board. It is very important to only remove the microphone and leave everything else in tact.





REMOVING THE LIGHT SENSOR

This process is not quite as difficult as removing the microphones and not quite as beneficial either, but I think it is still an important measure to be taken. Yes you will have to manually adjust your screen brightness, not a big deal. To remove simply put a scalpel under the black piece of the sensor and pry it off. All that will be left in its place are a few copper pads.



CONCLUSION

All that you need to properly modify your new boog phone is a little bit of patience and some tools. With this phone partially modified you can now buy and use a lapel mic when you want to talk. You should leave the device in airplane mode and only ever connect to something like a Tor Pi. We have a guide on building one of these as well. Also you should always leave this device at home, never put a SIM card in it and remove the battery when you will not be using it for long periods of time. If you follow these strict steps the enemy will have a very hard time identifying you. Now you can eliminate all the incriminating thought crime from your normie phone and relax.

THANK YOU

Thank you for reading this guide! If you found this free guide particularly helpful, please consider donating a few shekels our way!

Pro-tip: Before sending any donation to the address listed, make sure you double-check that the PGP signature included in the .zip with the document is **valid**.

You can always message me first at [@opsecgoy](https://t.me/@opsecgoy) on Telegram to confirm.

Thanks again for your support,
"From war to victory!"
-OpSecGoy

卐卐卐

Privacy & Security Goy Hidden Service:

goysec74znsyewq3nu2i3kmwozxptc3lx22jg67km6r2we37ejiaz5yd.onion

Telegram

Channel: [@PrivSecGoy](https://t.me/@PrivSecGoy)

Chat: [@PrivSecChat](https://t.me/@PrivSecChat)

Monero:

44afqsvYK6qeqPsNftcqWeJNSqYjP8jXtFcX2A8AQDKzCR1pusDSUehXNJBCqjmf4oV
wd7VsRr2NZVMdEEe6i78ESzYcXWp